

TWENTY FIVE ON THE PARK

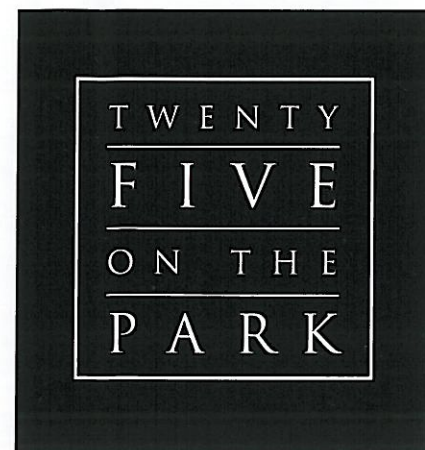
1806 A	\$435,000
1806 B	\$555,000
1806 C	\$435,000
1808 A	\$555,000
1808 B	\$555,000
1810 A	\$585,000
1810 B	\$560,000
1810 C	\$585,000
1812 A	SOLD
1812 B	\$560,000
1814 C	\$585,000
1814 A	\$555,000
1814 B	\$585,000
1816 A	\$440,000
1816 B	\$355,000
1816 C	\$435,000
1818 A	\$585,000
1818 B	\$560,000
1818 C	\$585,000
1820 A	\$410,000
1820 B	\$400,000
1820 C	\$435,000
1822 A	\$435,000
1822 B	\$555,000
1822 C	\$435,000



Floor plans and square footages of residential units, including decks and stairs (and locations of such), as shown on marketing materials are approximate and should be verified independently by buyer. Actual floor plans and square footages may vary in a continuing effort to improve its products. Builder reserves the right to make modifications to the design, specification, material and/or floor plans for the residential units at any time and without prior notice. Renderings and maps are artist's impressions only. Each Dwelling Company entity is an independent corporation or separate company. Built by Jacobson House, Inc.



11th Avenue



MADE FOR THE CITY LIFE

- Sustainable bamboo hardwood flooring on main floor
- Dense, low-cut designer carpet in bedrooms
- Painted millwork
- Large, over-sized windows for maximum natural light
- Contemporary brushed nickel and glass lighting fixtures
- Open and flexible floor plans allow you to create spaces for the way you want to live
- Select homes feature spiral stairs leading to roof top decks – enjoy the fresh air and entertain with friends!

KITCHENS THAT COOK

- Rich, African Mahogany cabinet doors with contemporary satin nickel pulls
- Beautiful slab granite countertops with full height backsplash
- Delta urban collection faucet
- All stainless KitchenAid professional grade appliance package (range, hood, microwave, dishwasher)

BATHROOMS DELUXE

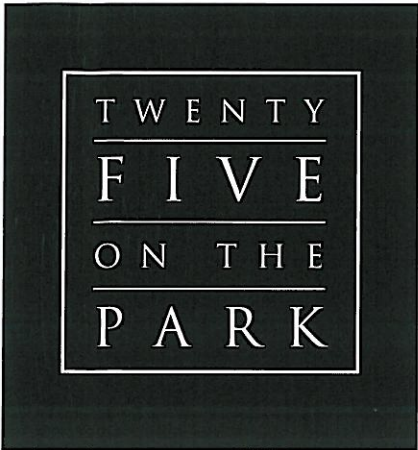
- Lavishly tiled statement baths and chrome faucets
- Rich, African Mahogany cabinet doors with contemporary satin nickel pulls
- Luxurious, “frameless” glass shower surround in master bathroom
- Contemporary, square undermount master bath sink

URBAN CONVENIENCE

- Secure, garage parking
- “Technology Ready” with data/voice cable CATV Wiring and conduit for future growth
- Highly desirable Capitol Hill location across from Cal Anderson Park

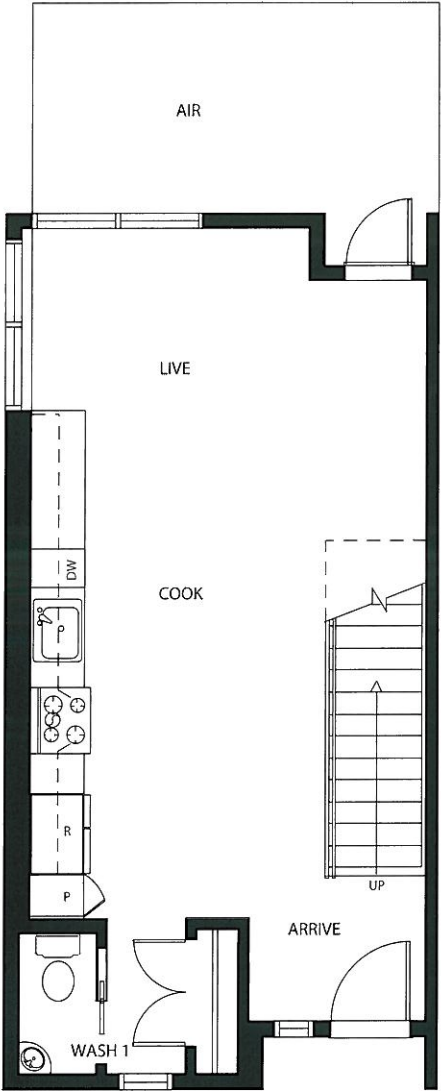
Floor plans and square footages of residential units, including decks and stairs (and locations of such), as shown on marketing materials are approximate and should be verified independently by buyer. Actual floor plans and square footages may vary. In a continuing effort to improve its products, Builder reserves the right to make modifications to the design, specification, material and/or floor plans for the residential units at any time and without prior notice. Renderings and maps are artist's impressions only. Each Dwelling Company entity is an independent corporation or separate company. Built by Jacobson House, Inc.



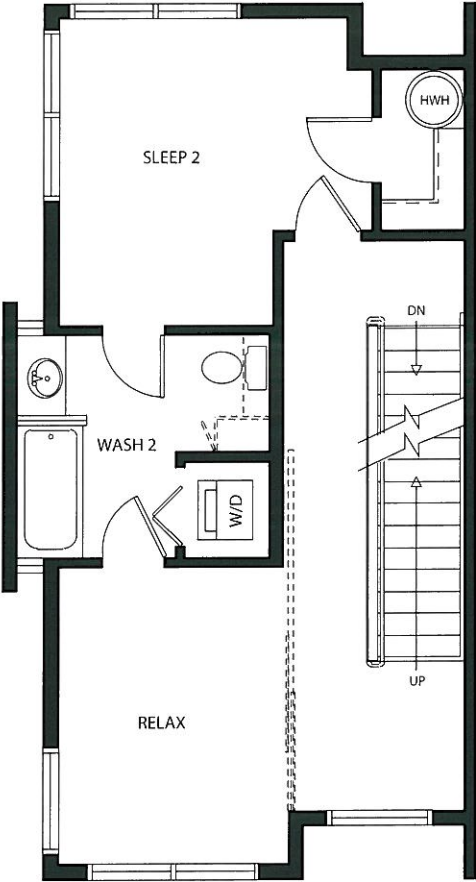


Plan A

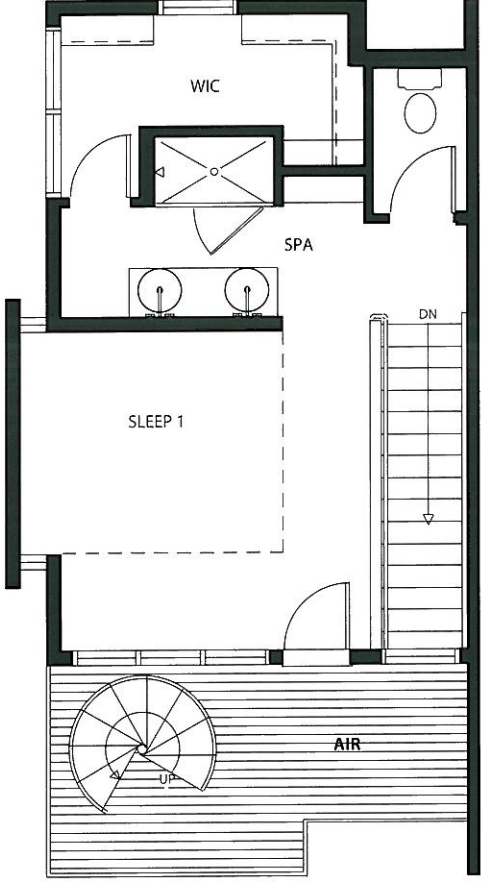
2 Bedroom + Den
2.5 Bath
1,506 sq.ft.



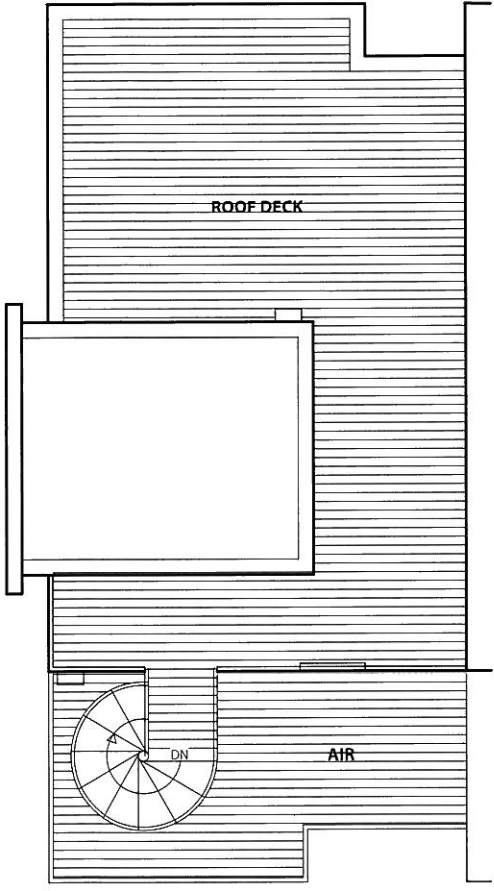
Main Floor



Upper Floor 1



Upper Floor 2



Roof Deck

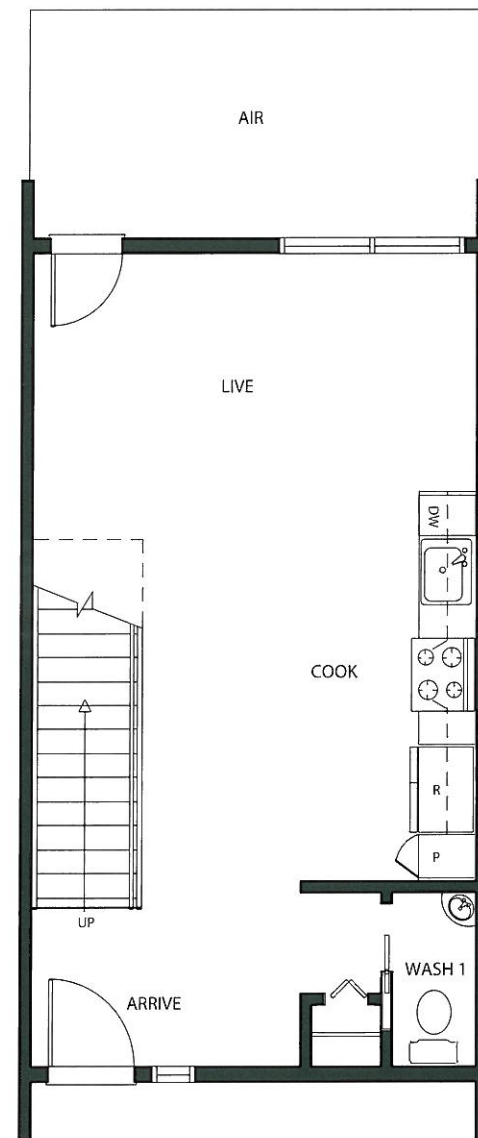
Floor plans and square footages of residential units, including decks and stairs (and locations of such), as shown on marketing materials are approximate and should be verified independently by buyer. Actual floor plans and square footages may vary. In a continuing effort to improve its products, Builder reserves the right to make modifications to the design, specification, material and/or floor plans for the residential units at any time and without prior notice. Renderings and maps are artist's impressions only. Each Dwelling Company entity is an independent corporation or separate company. Built by Jacobson House, Inc.



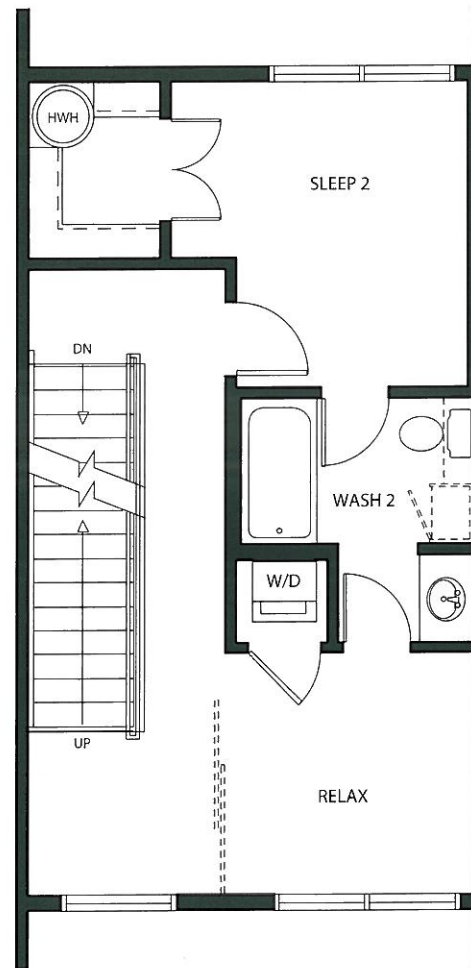
TWENTY
FIVE
ON THE
PARK

Plan B

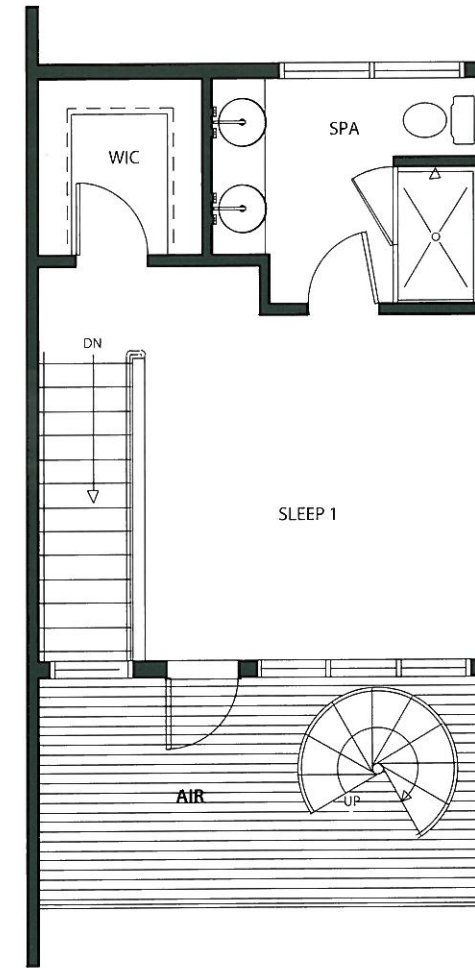
2 Bedroom + Den
2.5 Bath
1,339 sq. ft.



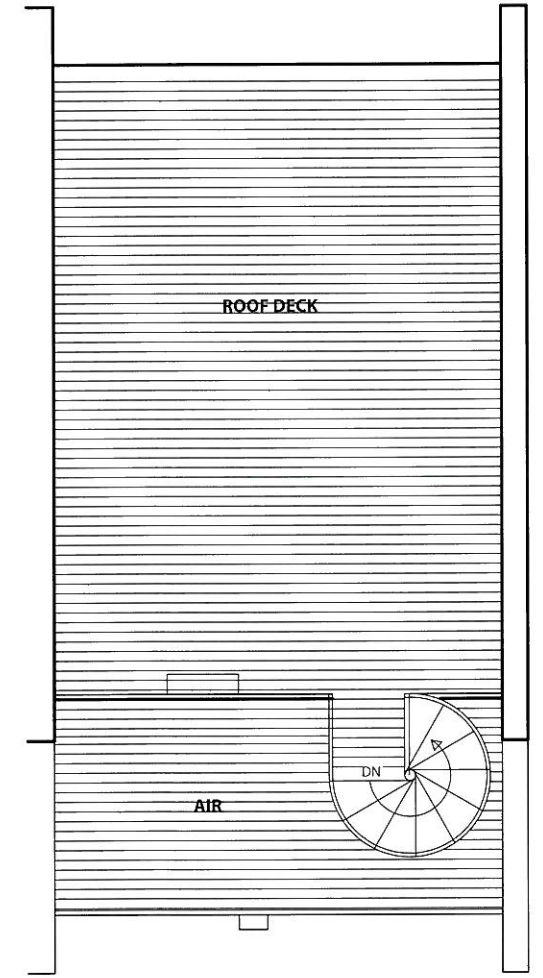
Main Floor



Upper Floor 1



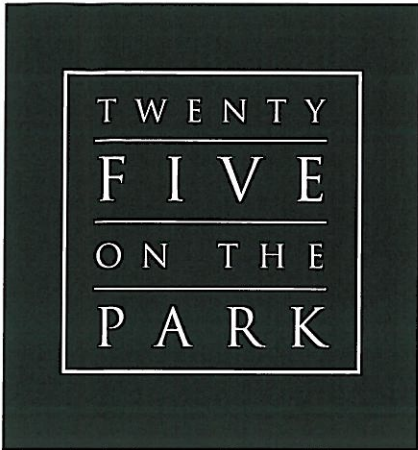
Upper Floor 2



Roof Deck

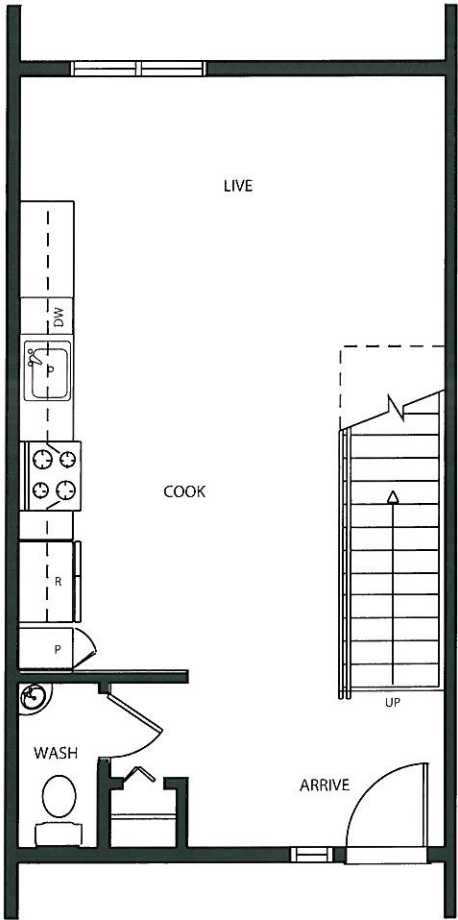
Floor plans and square footages of residential units, including decks and stairs (and locations of such), as shown on marketing materials are approximate and should be verified independently by buyer. Actual floor plans and square footages may vary. In a continuing effort to improve its products, Builder reserves the right to make modifications to the design, specification, material and/or floor plans for the residential units at any time and without prior notice. Renderings and maps are artist's impressions only. Each Dwelling Company entity is an independent corporation or separate company. Built by Jacobson House, Inc.



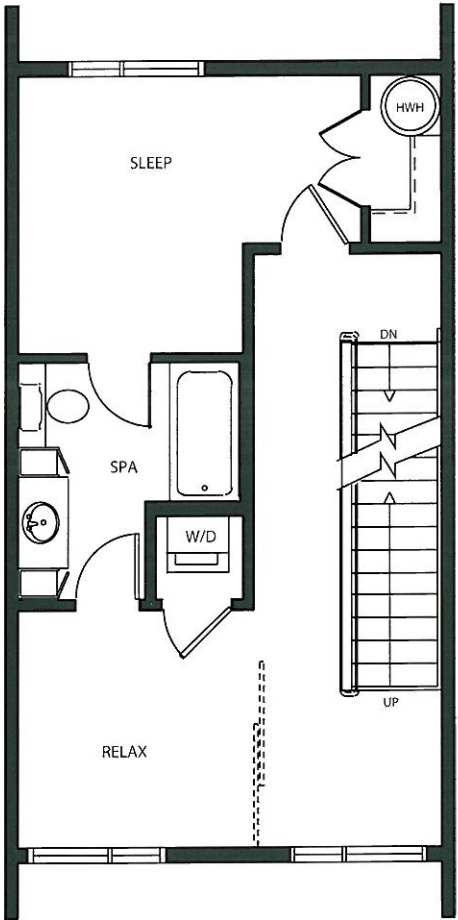


Plan C

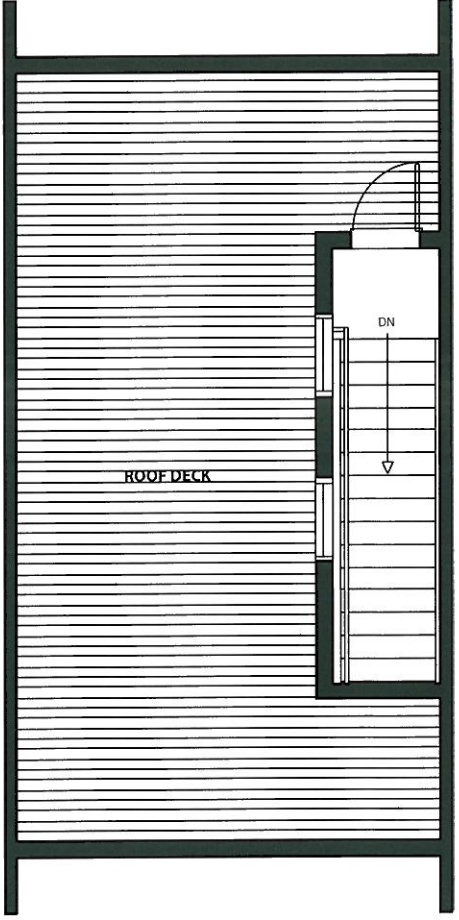
1 Bedroom + Den
1.5 Bath
1,062 sq. ft.



Main Floor



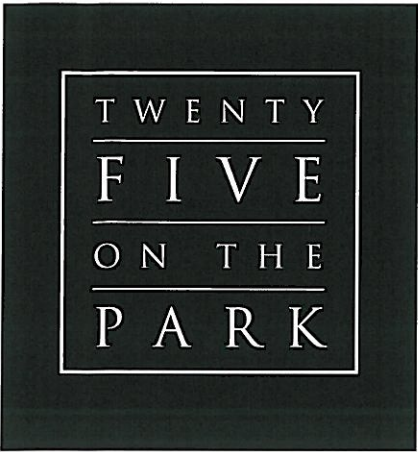
Upper Floor



Roof Decks

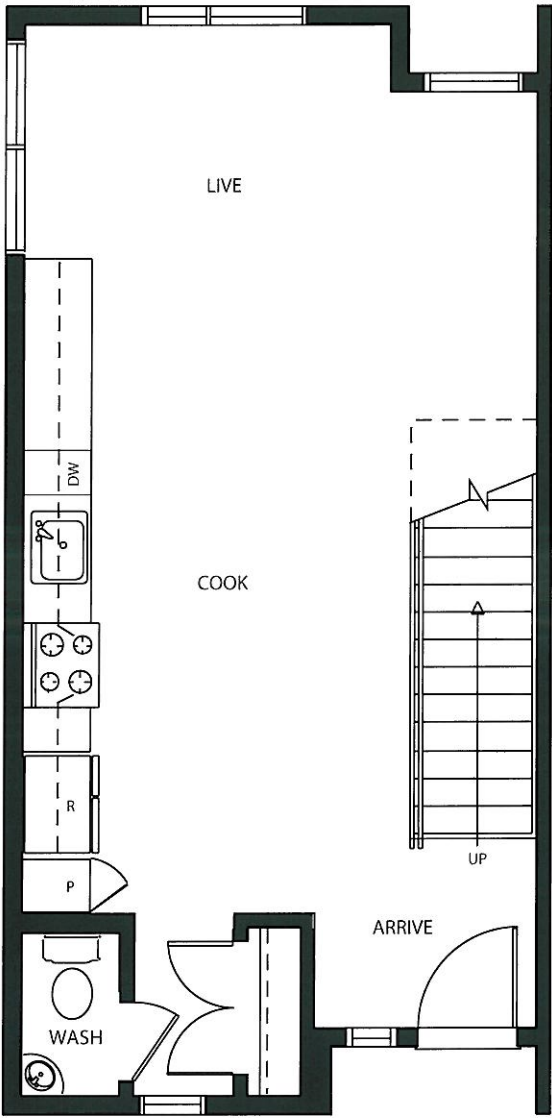
Floor plans and square footages of residential units, including decks and stairs (and locations of such), as shown on marketing materials are approximate and should be verified independently by buyer. Actual floor plans and square footages may vary. In a continuing effort to improve its products, Builder reserves the right to make modifications to the design, specification, material and/or floor plans for the residential units at any time and without prior notice. Renderings and maps are artist's impressions only. Each Dwelling Company entity is an independent corporation or separate company.
Built by Jacobson House, Inc.



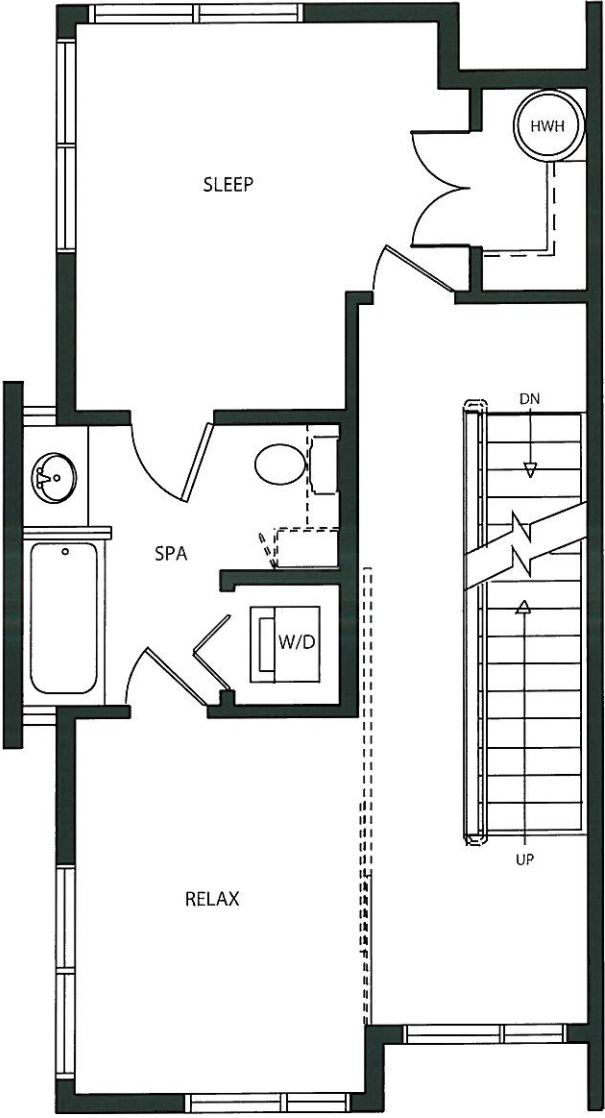


Plan D

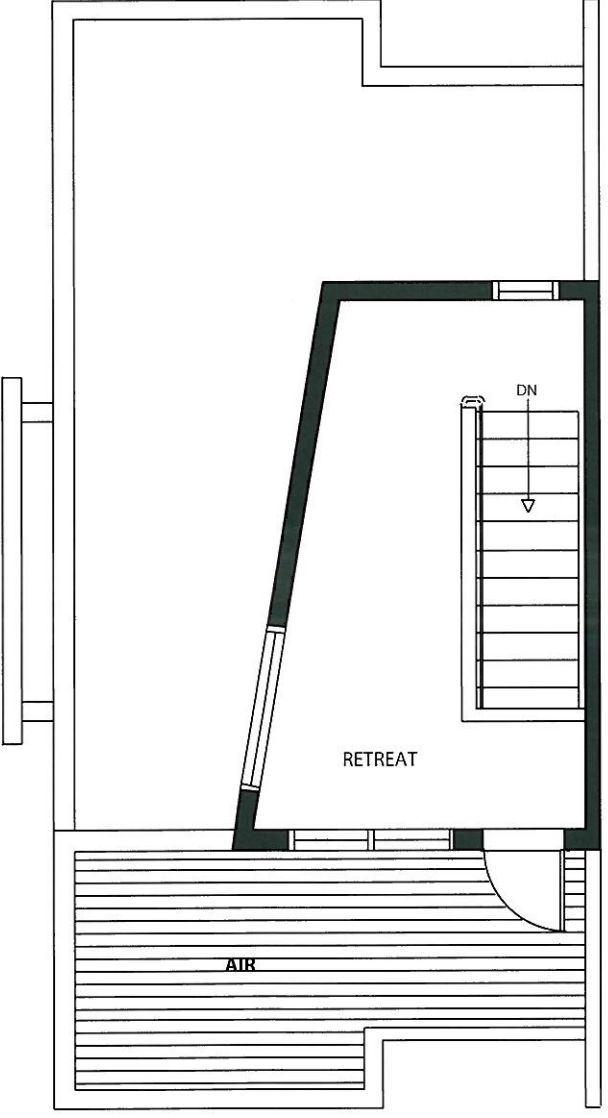
1 Bedroom + Den
+ Flex
1.5 Bath
1,254 sq. ft.



Main Floor



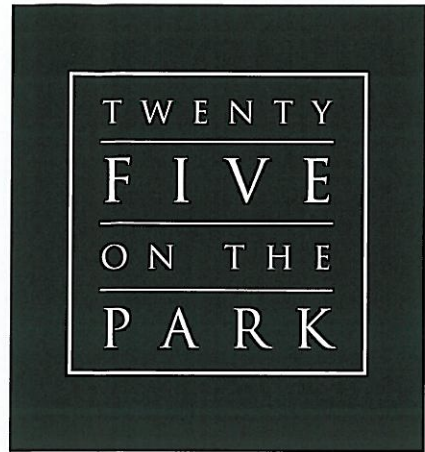
Upper Floor 1



Upper Floor 2

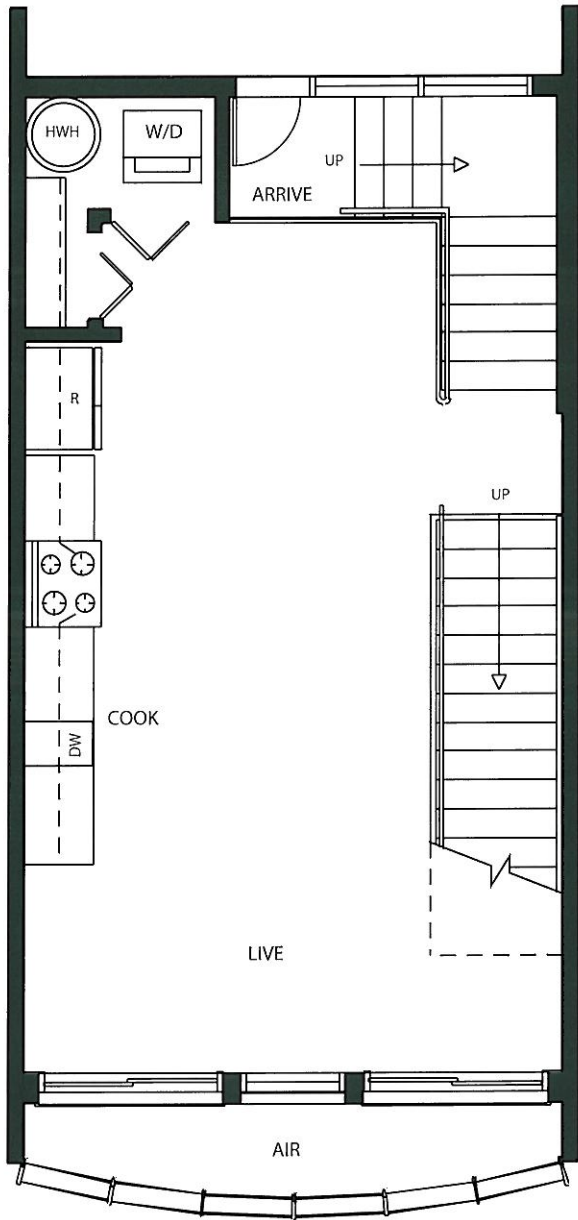
Floor plans and square footages of residential units, including decks and stairs (and locations of such), as shown on marketing materials are approximate and should be verified independently by buyer. Actual floor plans and square footages may vary. In a continuing effort to improve its products, Builder reserves the right to make modifications to the design, specification, material and/or floor plans for the residential units at any time and without prior notice. Renderings and maps are artist's impressions only. Each Dwelling Company entity is an independent corporation or separate company. Built by Jacobson House, Inc.



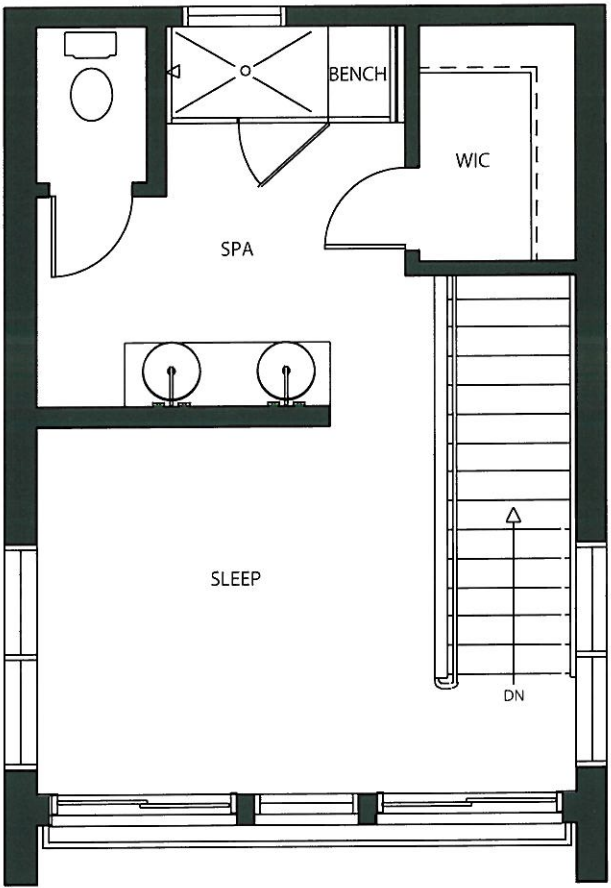


Plan G

1 Bedroom
1 Bath
875 sq. ft.



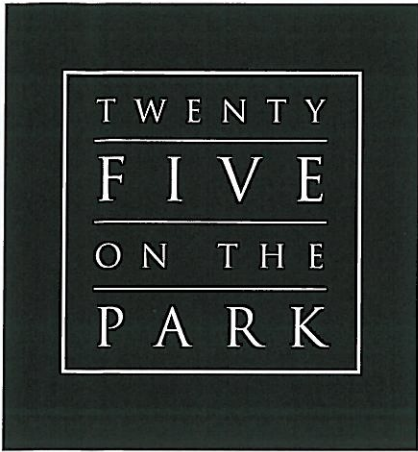
Main Floor



Upper Floor

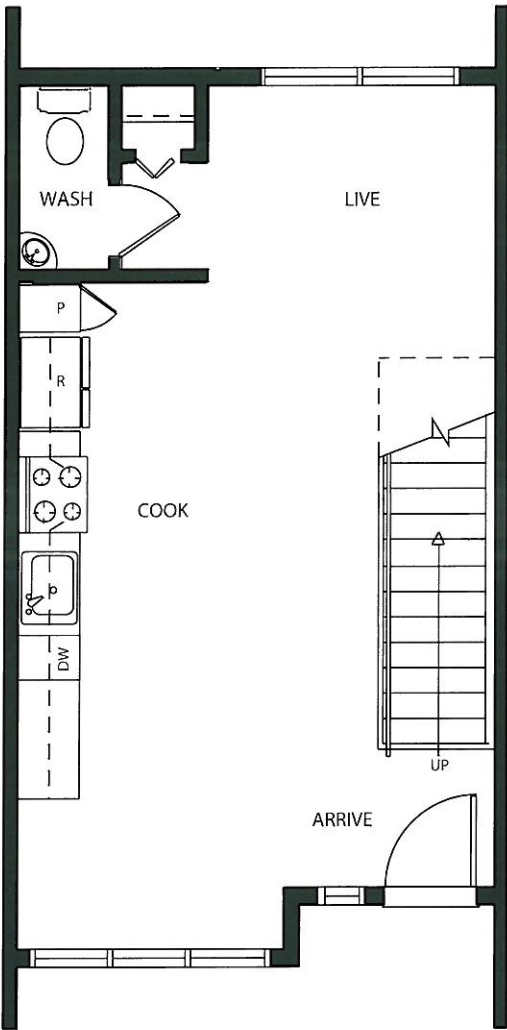
Floor plans and square footages of residential units, including decks and stairs (and locations of such), as shown on marketing materials are approximate and should be verified independently by buyer. Actual floor plans and square footages may vary. In a continuing effort to improve its products, Builder reserves the right to make modifications to the design, specification, material and/or floor plans for the residential units at any time and without prior notice. Renderings and maps are artist's impressions only. Each Dwelling Company entity is an independent corporation or separate company. Built by Jacobson House, Inc.



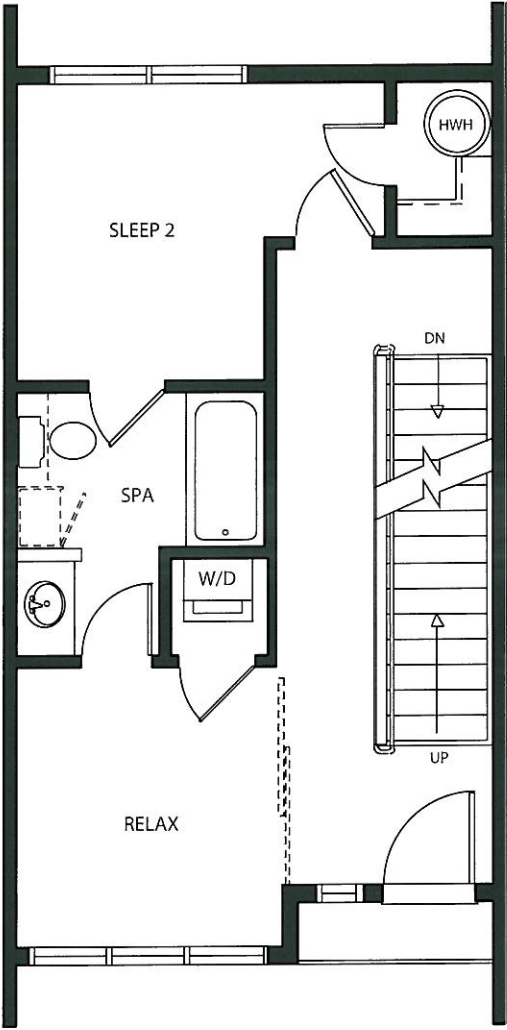


Plan E

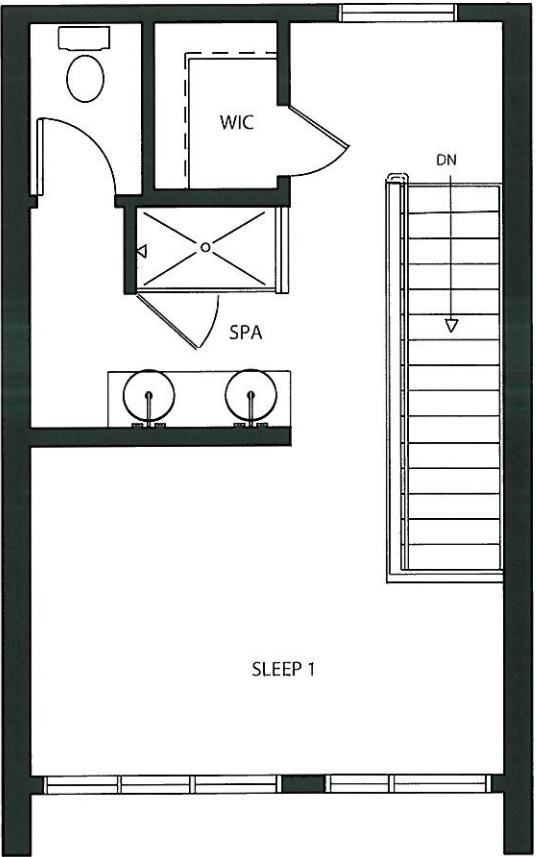
2 Bedroom + Den
2.5 Bath
1,401 sq. ft.



Main Floor



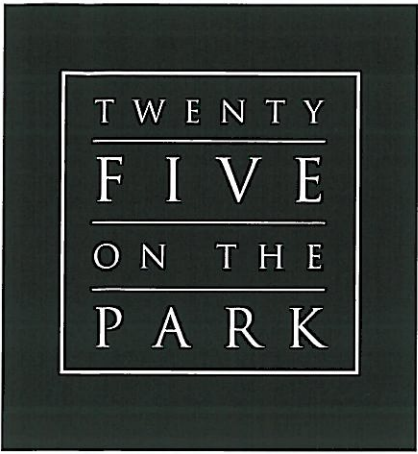
Upper Floor 1



Upper Floor 2

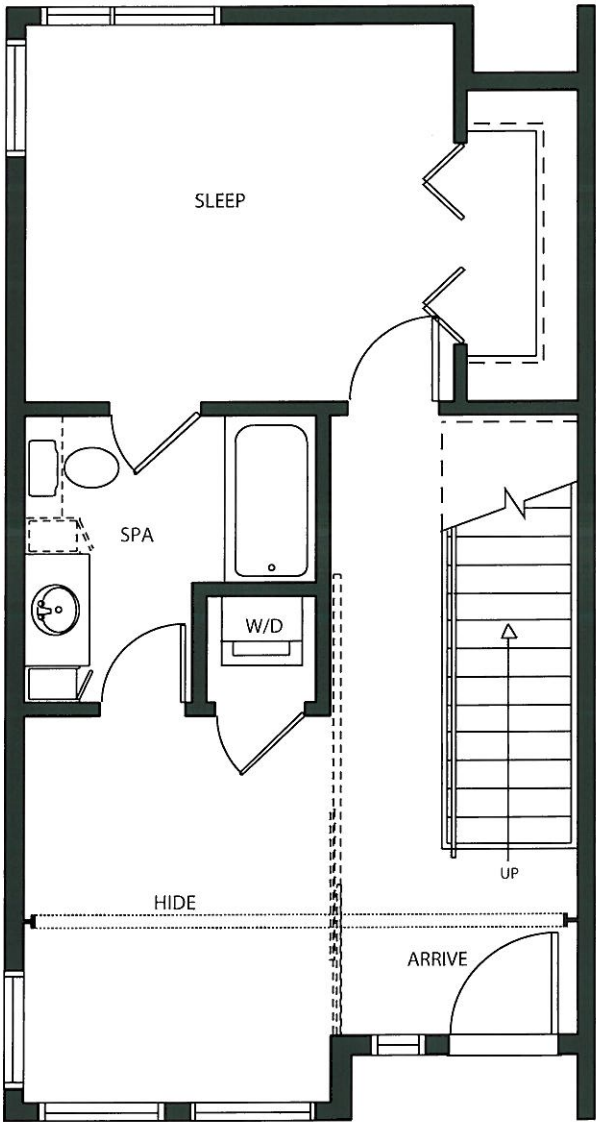
Floor plans and square footages of residential units, including decks and stairs (and locations of such), as shown on marketing materials are approximate and should be verified independently by buyer. Actual floor plans and square footages may vary. In a continuing effort to improve its products, Builder reserves the right to make modifications to the design, specification, material and/or floor plans for the residential units at any time and without prior notice. Renderings and maps are artist's impressions only. Each Dwelling Company entity is an independent corporation or separate company. Built by Jacobson House, Inc.



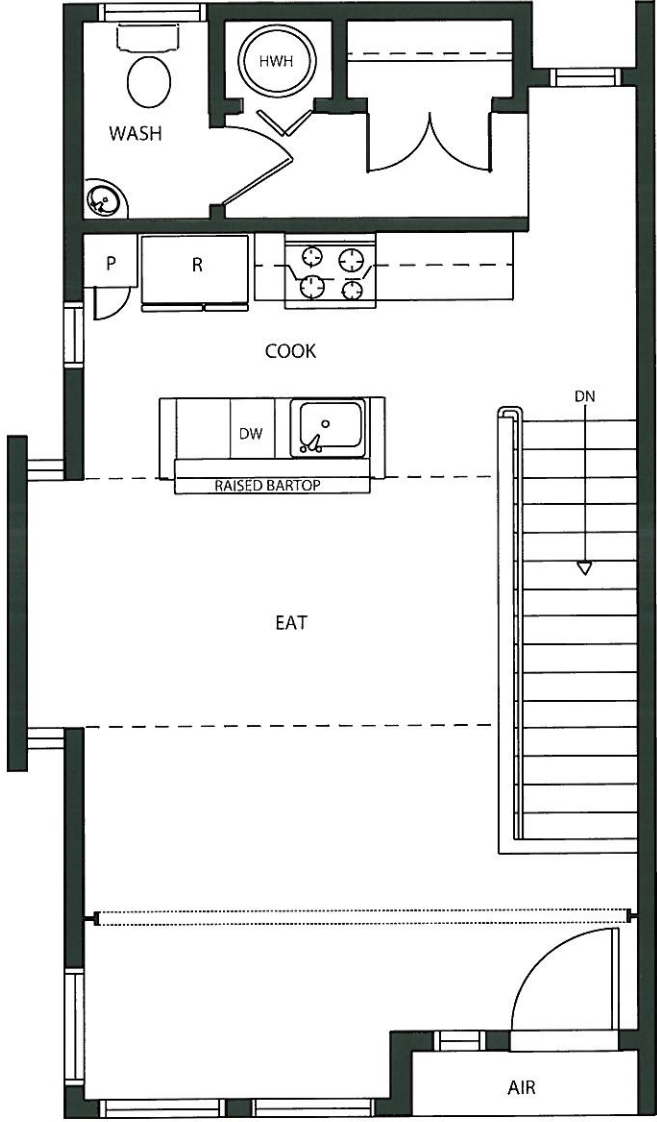


Plan F I

1 Bedroom
1.5 Bath
1,078 sq. ft.



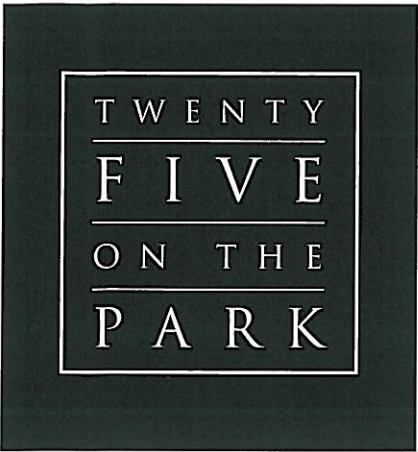
Main Floor



Upper Floor

Floor plans and square footages of residential units, including decks and stairs (and locations of such), as shown on marketing materials are approximate and should be verified independently by buyer. Actual floor plans and square footages may vary. In a continuing effort to improve its products, Builder reserves the right to make modifications to the design, specification, material and/or floor plans for the residential units at any time and without prior notice. Renderings and maps are artist's impressions only. Each Dwelling Company entity is an independent corporation or separate company. Built by Jacobson House, Inc.

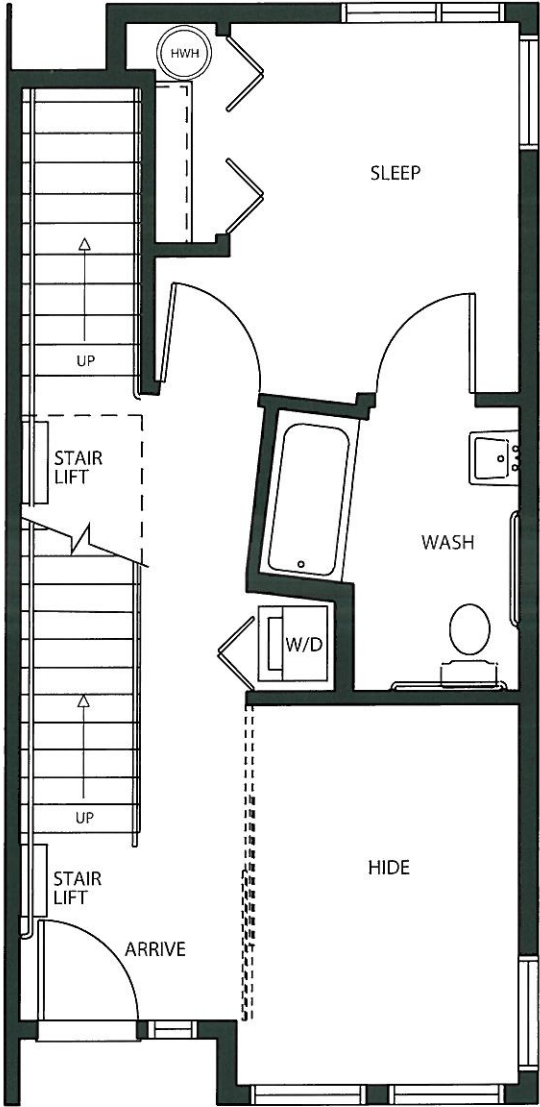




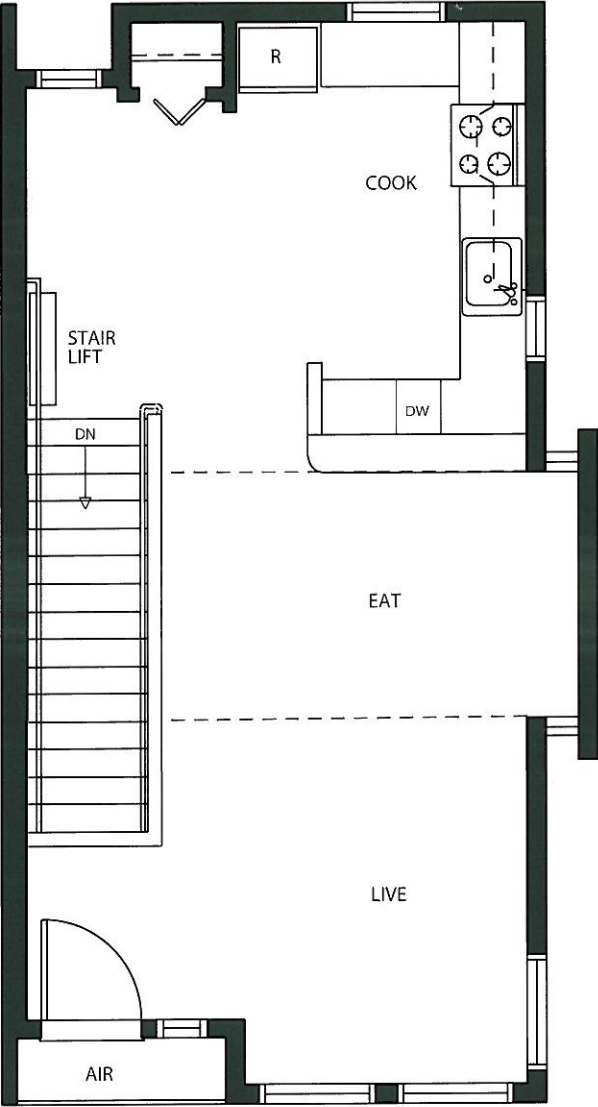
Plan F2

ADA Compliant

1 Bedroom
1 Bath
1,197 sq. ft.



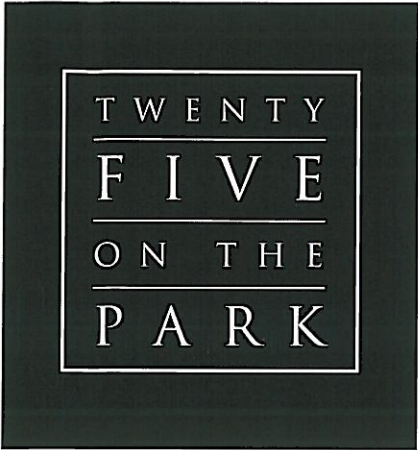
Lower Floor



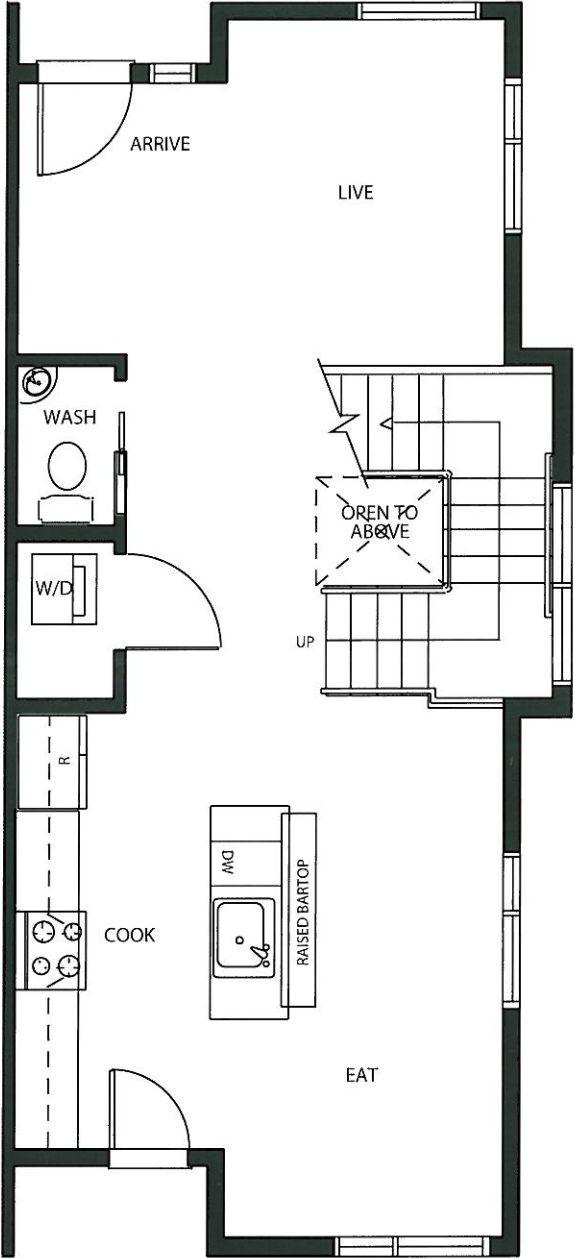
Main Floor

Floor plans and square footages of residential units, including decks and stairs (and locations of such), as shown on marketing materials are approximate and should be verified independently by buyer. Actual floor plans and square footages may vary. In a continuing effort to improve its products, Builder reserves the right to make modifications to the design, specification, material and/or floor plans for the residential units at any time and without prior notice. Renderings and maps are artist's impressions only. Each Dwelling Company entity is an independent corporation or separate company. Built by Jacobson House, Inc.

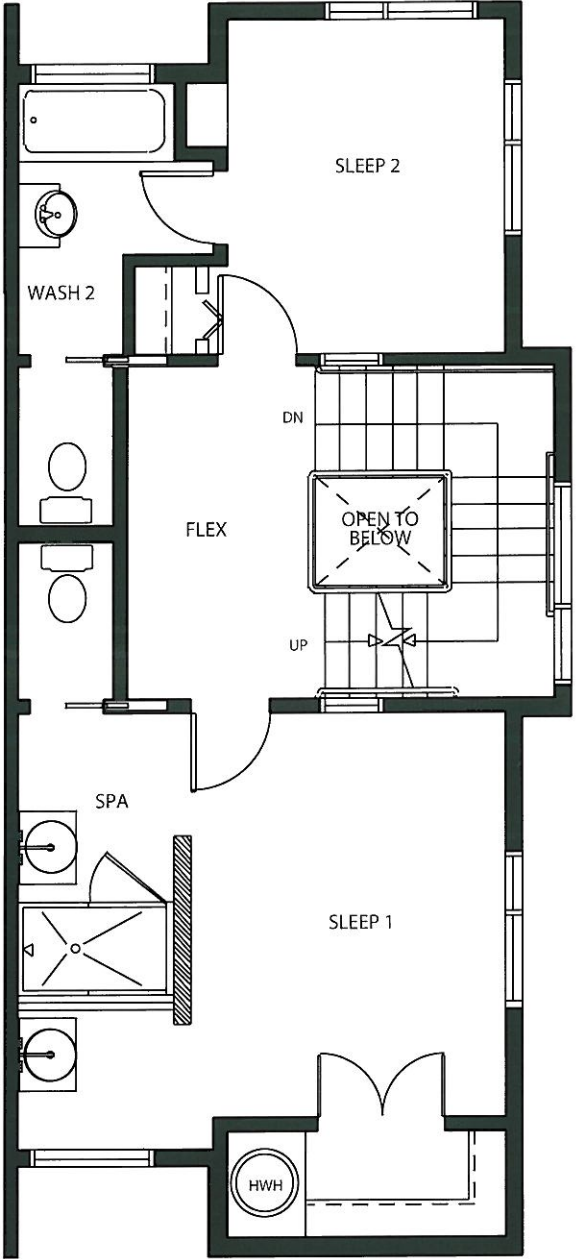




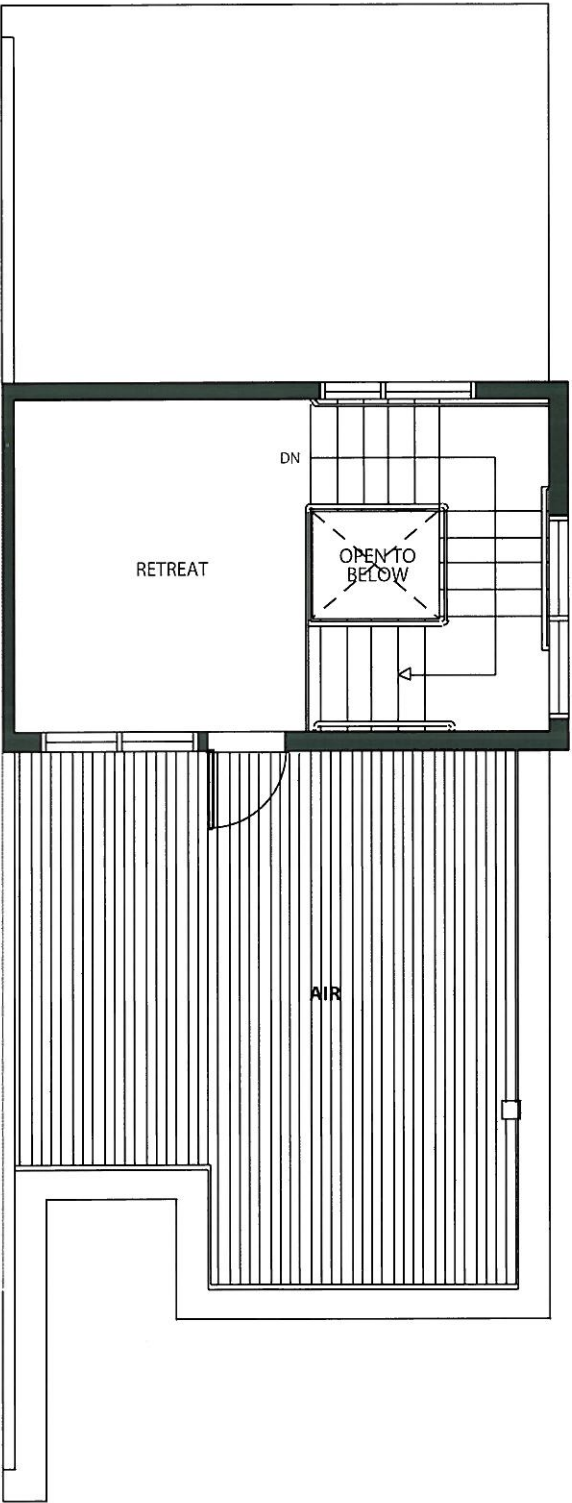
Plan H2 2 Bedroom + Den
+ Flex
2.5 Bath
1,520 sq. ft.



Main Floor



Upper Floor 1



Upper Floor 2

Floor plans and square footages of residential units, including decks and stairs (and locations of such), as shown on marketing materials are approximate and should be verified independently by buyer. Actual floor plans and square footages may vary. In a continuing effort to improve its products, Builder reserves the right to make modifications to the design, specification, material and/or floor plans for the residential units at any time and without prior notice. Renderings and maps are artist's impressions only. Each Dwelling Company entity is an independent corporation or separate company. Built by Jacobson House, Inc.

