

# VOLTA

2233 1st Avenue, Seattle, WA • [www.VoltaOnBell.com](http://www.VoltaOnBell.com)



- Located in the heart of Belltown, walk score 97.
- Floor to ceiling triple laminated windows on 3 sides, great views!
- Rooftop decks, dramatic unit decks on floor 4.
- High-end infrastructure and systems. A/C plumbed in every unit.
- Green features and energy efficiencies.
- See website for offer packet and instructions after April 22nd, 2011.
- Buyer tours start now, see website for details.

**THE OFFERING:** Alchemy Real Estate has been retained to present **VOLTA**, a partially completed, bank owned asset, located in Belltown in the heart of downtown Seattle. This property is constructed of brick, steel and concrete and is Seattle's finest example of a property destined to become a landmark. **VOLTA's** progress construction has been done to the highest standard. This property is being offered in it's AS-IS condition.



## Sealed envelope offers are due by May 9th at Noon!

### BUILDING HIGHLIGHTS

Number of Units	34 residential + 1 commercial
Building Status	Approximately 85% Complete (buyer to verify)
Building Size	54,550 Sq. Ft. Gross / 30,213 Sq. Ft. Net Per King County Records
Lot Size	6,660
2011 Property Taxes	\$46,230
Zoning	DMR/R 85/65
Parking	29 stalls on two decks
Storage	Various configurations

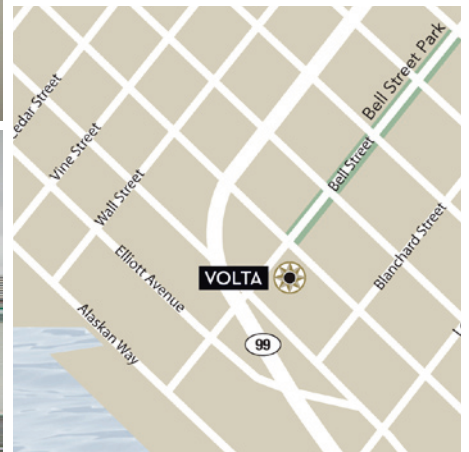
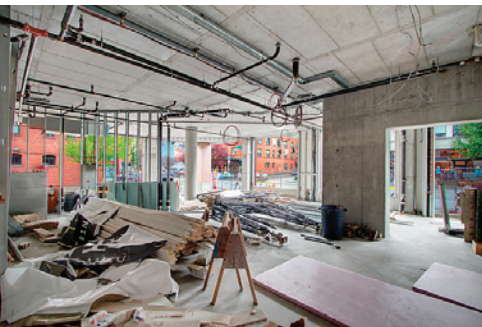
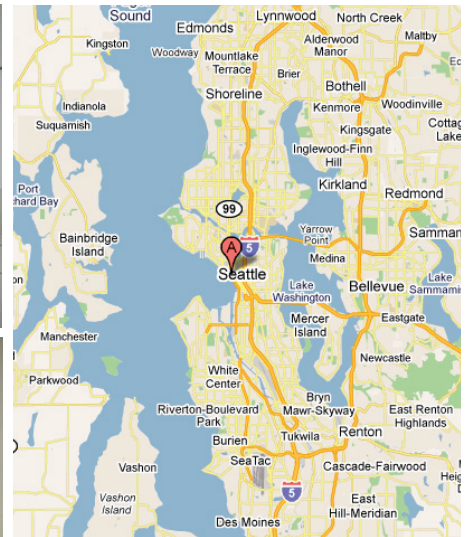


**ALCHEMY**  
THE SCIENCE OF REAL ESTATE

For more info contact Jay Miller • (206) 409-4332 • [Jay@AlchemyRealEstate.com](mailto:Jay@AlchemyRealEstate.com)

# VOLTA

2233 1st Avenue, Seattle, WA • [www.VoltaOnBell.com](http://www.VoltaOnBell.com)



Seller makes no representations as to conditions of improvements. Building offered in as-is condition.

**ALCHEMY**  
THE SCIENCE OF REAL ESTATE

For more info contact Jay Miller • (206) 409-4332 • [Jay@AlchemyRealEstate.com](mailto:Jay@AlchemyRealEstate.com)