



Dwell Development Central Seattle Modern

5-Star Built Green | Designed for Net Zero Electricity

415 16th Avenue South, Seattle WA 98144

Approx. 3,285 SF | 4 Bedrooms | 3 1/2 Baths | 1-car Garage

Flex Room with private entrance on Level One | Rooftop Deck with views

BUILDING SUMMARY

Level One: 758 SF*
 Level Two: 1070 SF
 Level Three: 1070 SF
 Penthouse: 142 SF
 Total Heated: 3040 SF

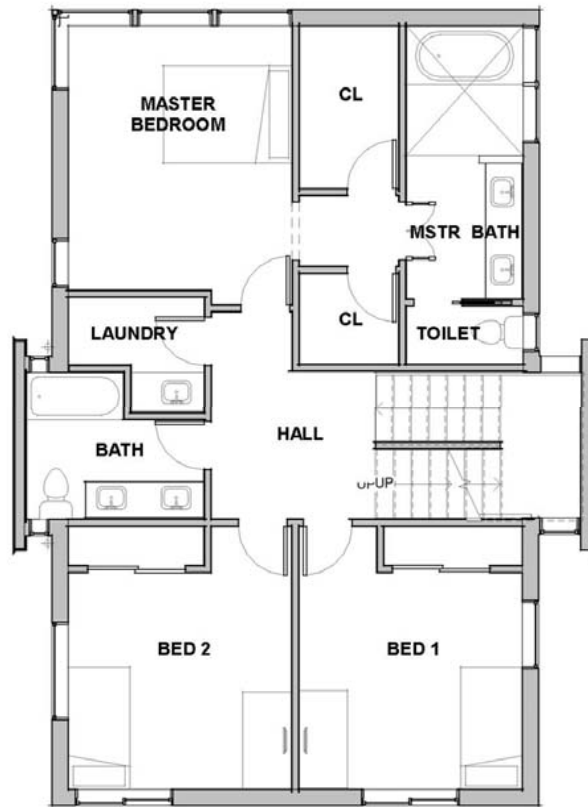
Garage: 245 SF

*Studio Kitchen is shown as an option only.

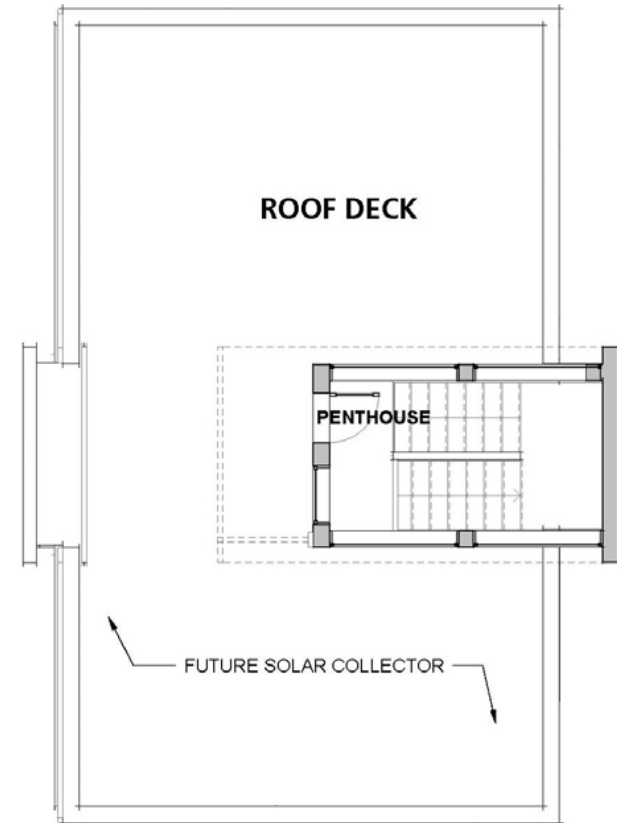
All dimensions are approximate. This plan is for marketing and planning purposes only. Sizes, square footages, designs, layouts, drawings and prices are subject to modification. Information contained herein is provided as a courtesy only, is not a warranty, and should be independently investigated by Buyers.

www.dwelldevelopment.com

LEVEL THREE



ROOF DECK





Dwell Development Central Seattle Modern

5-Star Built Green | Designed for Net Zero Electricity

415 16th Avenue South, Seattle WA 98144

Approx. 3,285 SF | 4 Bedrooms | 3 1/2 Baths | 1-car Garage

Flex Room with private entrance on Level One | Rooftop Deck with views

BUILDING SUMMARY

Level One: 758 SF*
 Level Two: 1070 SF
 Level Three: 1070 SF
 Penthouse: 142 SF
 Total Heated: 3040 SF

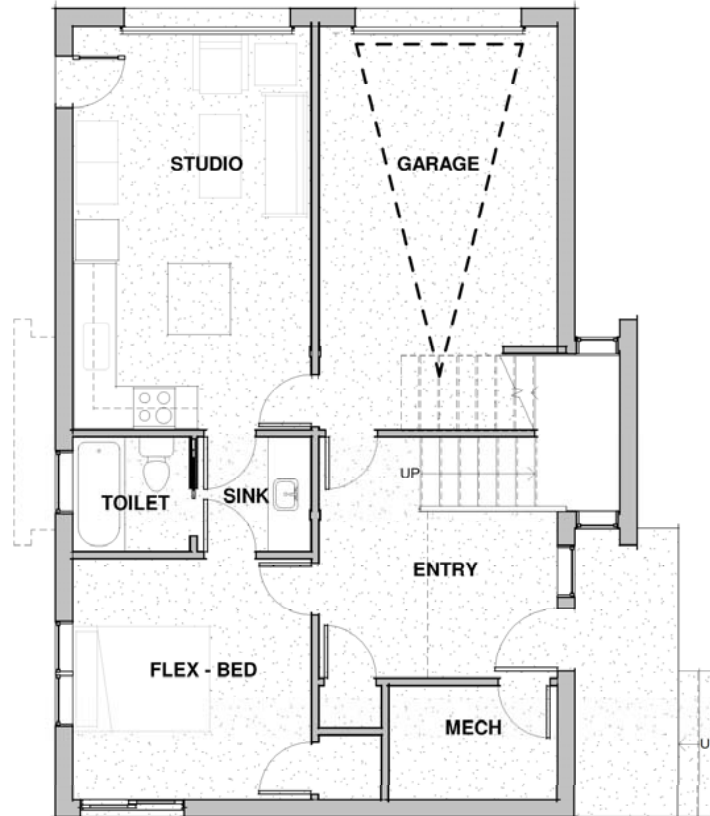
Garage: 245 SF

*Studio Kitchen is shown as an option only.

All dimensions are approximate.
 This plan is for marketing and planning purposes only. Sizes, square footages, designs, layouts, drawings and prices are subject to modification. Information contained herein is provided as a courtesy only, is not a warranty, and should be independently investigated by Buyers.

www.dwelldevelopment.com

LEVEL ONE



LEVEL TWO

